

LEATHER



G



PF08



PF16



PF06



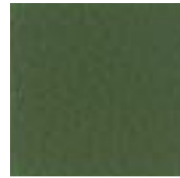
PF03



PF04



PF01



PF20



PF11



PF13



PF10



PF09



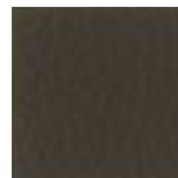
PF05



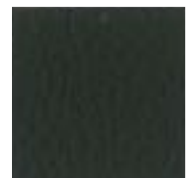
PF21



PF02



PF15



PF07



Bovine Hide



Genuine Leather



700 g/m<sup>2</sup>



EN ISO 1021 1-2  
BS 5852 1990 SEC. 4 NI/0-1



EN ISO 105 B02 (5)  
IUF 450/ UNI EN ISO 11640 (≥4)

# IKON EXTREMA

Synthetic Leather



# G



63% PU  
29% COT  
8% PES



480 g/m<sup>2</sup>



BS 5852 CRIB 5  
BS 5852-1 PART 1  
IMO resolution A.652 (16): 1989  
EN 1021-2  
UNI 9175 classe 1 IM  
TB 117 sez. E - p. 1 (California)



UNI EN ISO 12947 - 2  
150.000 Cicli/Cycles



EN ISO 105 B02 (5-6)



WATERPROOF



NO PHTHALATES



ANTI-FUNGAL  
TREATMENT



KE10



KE09



KE06



KE01



KE02



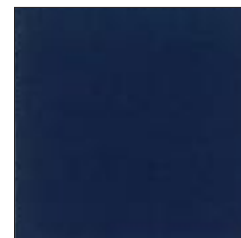
KE03



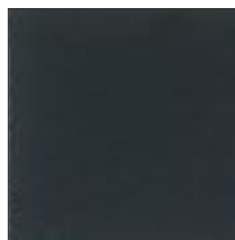
KE04



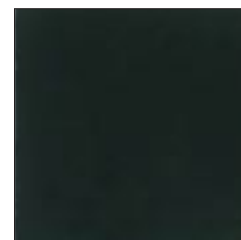
KE05



KE07



KE11



KE08

CYCLE



G



72% Cradura  
16% Lana/wool  
12% Red. Lenzing FR™



437 g/m<sup>2</sup>



EN 1021-1/2  
BS 5852-0/1  
IMO Resolution MSC 307 (88)  
Annex 1, Part 8  
UNI 9175, Classe UNO I EMME  
California TB 117, Class 1



UNI EN ISO 12947 - 2  
500.000 Cicli/Cycles



EN ISO 105 B02 (6-7)  
EN ISO 105 X12 (5)



Oeko-Tex®



CY02



CY07



CY04



CY08



CY01



CY03



CY06



CY05

# TRACK



TK04



TK03



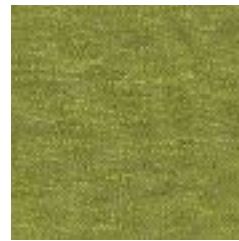
TK06



TK07



TK12



TK02



TK18



TK09



TK15



TK01



TK16

# G



100% Trevira CS® Flame Retardant Polyester  
Non metallic dyestuffs



550 g/m<sup>2</sup>



EN 1021-1 / EN 1021-2  
BS 7176 Low Hazard  
BS 5852 Ignition Source 5  
BS 7176 Medium Hazard  
DIN 4102 B1  
NF P 92-507 M1  
FMVSS 302  
ECE REGULATION No.118



UNI EN ISO 12947 - 2  
100.000 Cicli/Cycles  
10 years guarantee



EN ISO 105 B02 (6)



EN ISO 105 X12 (4)

# SYNERGY



SY55



SY63



SY62



SY53



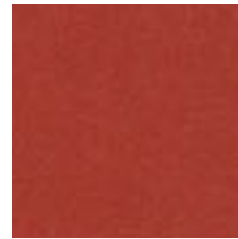
SY51



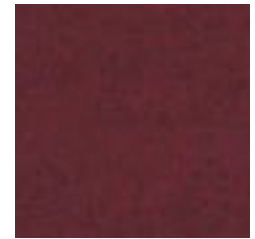
SY39



SY81



SY84



SY87

# G



95% Virgin Wool  
5% Polyamide  
Non metallic dyestuffs



400 g/m<sup>2</sup>



EN 1021-1 / EN 1021-2  
BS 7176 Low Hazard  
UNI 9175 Classe 1IM  
NF D 60-013  
ÖNORM B 3825 & A 3800-1



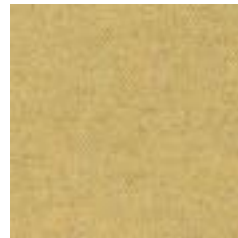
UNI EN ISO 12947 - 2  
100.000 Cicli/Cycles  
5 years guarantee



EN ISO 105 B02 (5)



EN ISO 105 X12 (4)



SY45



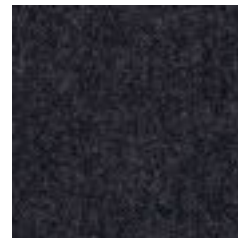
SY08



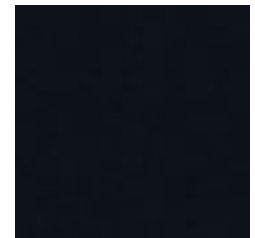
SY16



SY25

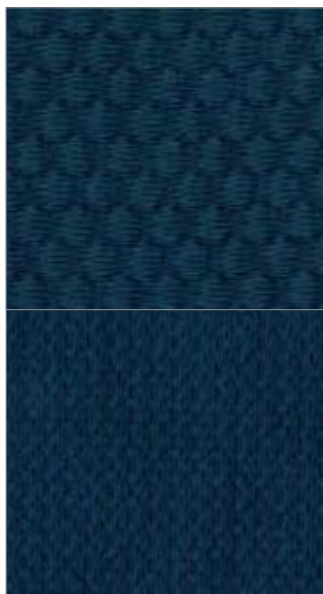


SY17



SY27

# VISUAL



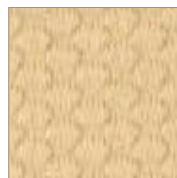
Visual  
Millennial  
(VM)

Visual  
Pixel (VX)

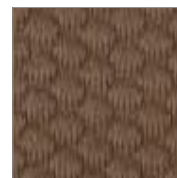
# G



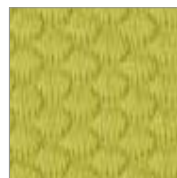
VM02/ VX02



VM08/ VX08



VM20/ VX20



VM04/ VX04



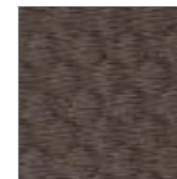
VM09/ VX09



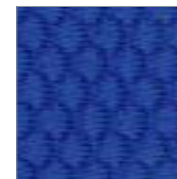
VM27/ VX27



VM28/ VX28



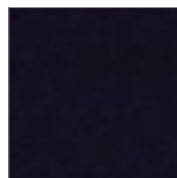
VM19/ VX19



VM23/ VX23



VM13/ VX13



VM25/ VX25



VM29/ VX29



VM30/ VX30



VM12/ VX12



100% Polyester



UNI EN ISO 12947 - 2 12945-2  
60.000 Cicli/Cycles



440 g/m<sup>2</sup>



DIN 4102-1 B1 EN ISO 1021 1-2  
BS 5852-1 CRIB5  
UNI 9175 classe 1IM IMO FTP CODE 2010



EN ISO 105-X12 B02 (4/5)

# CRAZY

Synthetic Leather



# F



80%PVC  
2%PU  
18%PES



600 g/m<sup>2</sup>



UNI 9175 CLASS 1 IM  
EN 1021 2



UNI EN ISO 5470-2  
50.000 Cicli/Cycles



EN ISO 105 B02 (5-7)  
EN ISO 105 X12 (4-5)



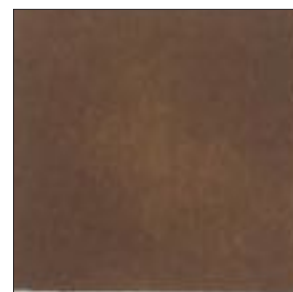
WATERPROOF



CZ07



CZ06



CZ03



CZ05



CZ02

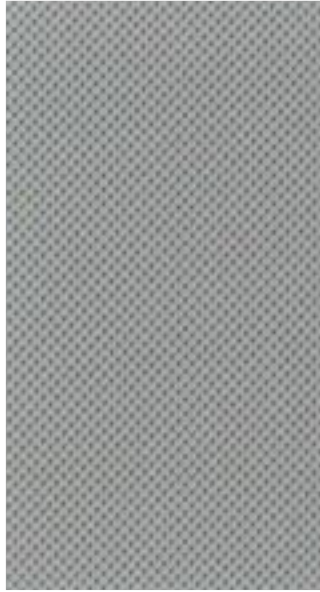


CZ04

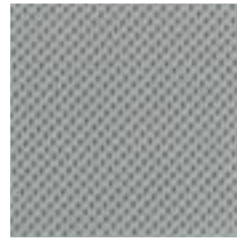


CZ01

# ATLANTIC



AN05



AN02



AN01



AN12



AN04



AN06



AN10

# F



100% Polyester



353 g/m<sup>2</sup>



UNI 9175 CLASS 1 IM  
EN 1021 1-2  
NF D 60-013  
NF - P 92-503:M3  
ONORM B 3825 B1 3800-Q1 UK



UNI EN ISO 12947 - 2  
110.000 Cicli/Cycles



EN ISO 105 B02 (5-7)  
EN ISO 105 X12 (4-5)



Oeko-Tex®



AN08



AN07



AN03



**XTREME**



**F**



YU91



YU72



YU76



YU79



YU02



YU96



YU77



YU27



YU94



YU26



YU19



YU13



YU81



YU05



YU45



YU01



YU46



YU73



YU11



YU12



YU09



YU84



YU30



100% Polyester FR (Tr Cs)



328 g/m<sup>2</sup>



UNI 9175 CLASS 1 IM  
EN 1021 1-2  
BS 5852 CRIB 5  
DIN 4102 B1



UNI EN ISO 12947  
100.000 Cicli/Cycles



EN ISO 105 B02 (5)



Oeko-Tex®

# MINI MELANGE



# F



100% Polyester Trevira CS



340 g/m<sup>2</sup>



UNI 9175 C1  
EN 1021 1-2  
NF P 92-501 M1  
DIN 4102 B1  
BS 5852 CRIB 5



UNI EN ISO 12947 - 2  
100.000 Cicli/Cycles



EN ISO 105 B02 (6)  
EN ISO 105 X12 (4-5)



Oeko-Tex®



MN09



MN08



MN01



MN10



MN04



MN07



MN05



MN06



MN02



MN03

**PLATINUM**  
Synthetic Leather



**F**



PT05



PT17



PT14



PT26



PT32



PT28



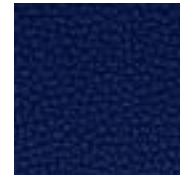
PT37



PT30



PT43



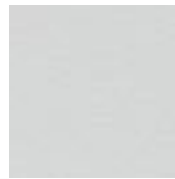
PT36



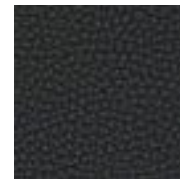
PT20



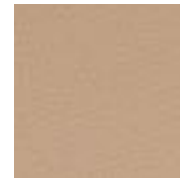
PT22



PT18



PT23



PT06



PT11



PT16



82% PVC 18% PES



650 g/m<sup>2</sup>



UNI 91751 IM  
EN BS 585 2-1  
DIN 4102-Teil1 p.6.2: B2  
EN 1021 parte 1-2  
IMO 2010 FTP CODE



UNI EN ISO 12947 - 2  
100.000 Cicli/Cycles



EN ISO 105 B02 (6/7)  
EN ISO 105 X12 (4/5)



WATERPROOF



HYPOALLERGENIC



ANTI-FUNGAL  
TREATMENT



NO PHTHALATES

MINI



**E**



MY13



MY12



MY01



MY03



MY04



MY05



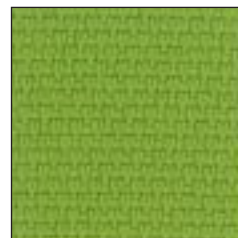
MY08



MY09



MY06



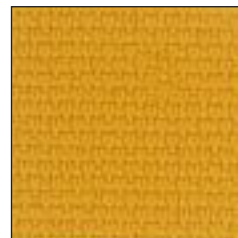
MY07



MY10



MY11



MY02



100% Polyester Trevira CS



340 g/m<sup>2</sup>



UNI 9175 C1M  
EN 1021 1-2  
NF 92501-7 M1  
DIN 4102 B1  
BS 5852 CRIB 5



UNI EN ISO 12947 - 2  
100.000 Cicli/Cycles



EN ISO 105 B02 (6)  
EN ISO 105 X12 (4-5)



Oeko-<sup>®</sup>Tex

# ROCCIA



# E



CC01



CC03



CC07



CC04



CC08



CC09



CC10



CC14



CC05



CC06



CC12



CC13



CC11



CC16



CC15



100% Polyester FR (Tr Cs)



250 g/m<sup>2</sup>



UNI 9175 C1  
EN 1021 1-2  
NF P 92-501 M1  
DIN 4102 B1  
BS 5852 CRIB 5



UNI EN ISO 12947 - 2  
70.000 Cicli/Cycles



EN ISO 105 B02 (6)  
EN ISO 105 X12 (4-5)



Oeko-Tex®

RADIO



**D**



RY02



RY04



RY11



RY03



RY10



RY05



RY07



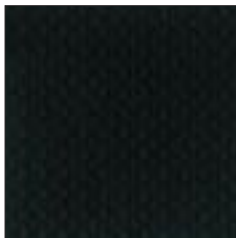
RY09



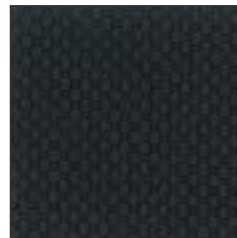
RY06



RY08



RY01



RY13



RY12



100% Polyester FR



400 g/m<sup>2</sup>



UNI 9175 C1M  
EN 1021 1-2  
NF 92501-7 M1  
DIN 4102 B1  
BS 5852 CRIB 5



UNI EN ISO 12947 - 2  
80.000 Cicli/Cycles

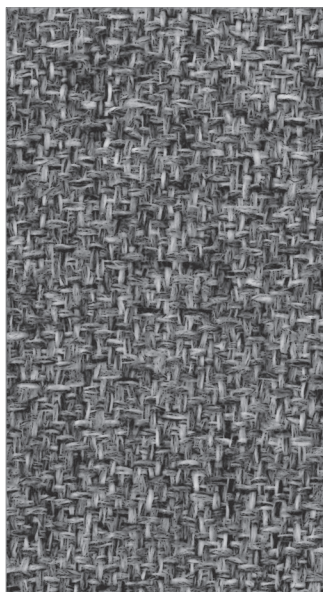


EN ISO 105 B02 (6)  
EN ISO 105 X12 (4-5)



Oeko-Tex®

# EXPO



# D



100% Propitex fr bacteriostatic



UNI EN ISO 12947 - 2  
100.000 Cicli/Cycles  
UNI EN ISO 105-X12



350 g/m2



UNI 9175 classe 1IM  
EN 1021 1-2:2006 crib 5  
TB117:2013, IMO 210 FTP CODE



EN ISO 105 B02 (5)



Sound Absorbing  
UNI EN ISO 354:2003, UNI EN ISO  
11654:1998, ASTM C423 - 09a



Oeko-Tex®



EX07



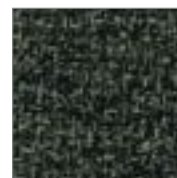
EX04



EX02



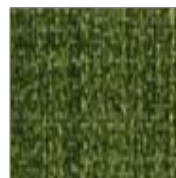
EX03



EX09



EX13



EX16



EX14



EX15



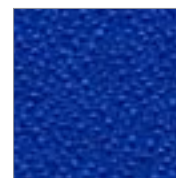
EX18



EX17



EX30



EX29



EX21

**KING**



**D**



100% Polyester Trevira CS



300 g/m<sup>2</sup>



UNI 9175 C1M  
EN 1021 1-2  
NF P 92501-7 M1  
DIN 4102 B1  
BS 5852 CRIB 5



UNI EN ISO 12947 - 2  
100.000 Cicli/Cycles



EN ISO 105 B02 (6)  
EN ISO 105 X12 (4-5)



Oeko-Tex®



KI35



KI50



KI27



KI17



KI14



KI05



KI25



KI02



KI23



KI01



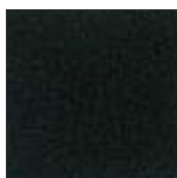
KI29



KI71



KI34



KI33



KI04



KI72



# SILVIA

Synthetic Leather



# D



69% PVC  
1% Polyurethane  
18% Cotton  
12% Polyester



520 g/m<sup>2</sup>



IMO resolution A.652 (16): 1989  
BS 5852-1 part 1  
EN 1021-2  
UNI 9175 classe 1 IM  
TB 117 sez.E - p.1 (California)



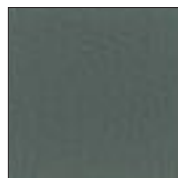
ISO 5470 - 2  
50.000 Cicli/Cycles



EN ISO 105 B02 (6)  
EN ISO 105 X12 (4-5)



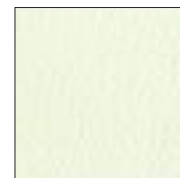
SL18



SL25



SL33



SL01



SL24



SL21



SL27



SL26



SL23



SL28



SL20



SL17



SL11



SL10



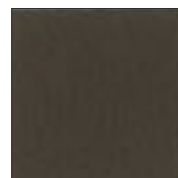
SL15



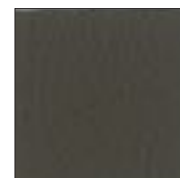
SL14



SL39



SL32



SL30



SL29



SL05

# VENERE



# D



VN61



VN64



VN65



VN60



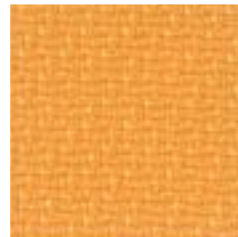
VN31



VN35



VN20



VN51



VN45



100% Polypropylene FR



250 g/m<sup>2</sup>



UNI 9175 C1  
EN 1021 1-2  
BS 5852 CRIB 5



UNI EN ISO 12947  
50.000 Cicli/Cycles



EN ISO 105 B02 (5)




Oeko-Tex®

LINE



B4 



B3 



B1 



B5 



B7 



B6 



B2 



B8



B10



100% Polyester



500 g/m<sup>2</sup>



EN 1021 1-2  
NF P 92-501 M2  
DIN 4102-1 B1



UNI EN ISO 12947-2  
120.000 Cicli/Cycles



NF T30-036 (ΔE<sub>lab</sub><3)  
QUVTEST (UVA 340/2000h)

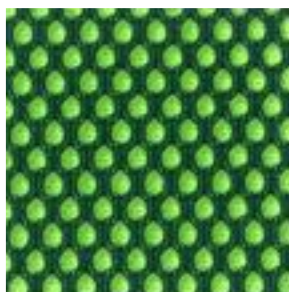


Oeko-Tex®

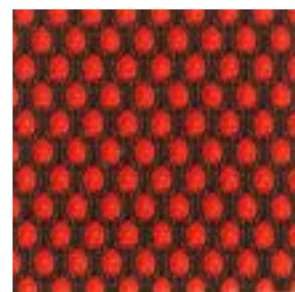
# SPIDER



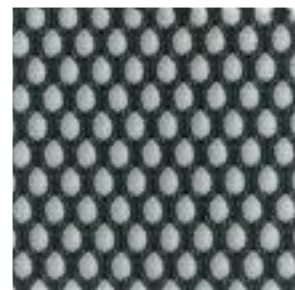
# M



S5



S4



S3



S6



S1



100% Polyester



390 g/m<sup>2</sup>



UNI EN 20344-5  
52.000 Cicli/Cycles



UNI 7633 (>4)

## RETE ATTIVA



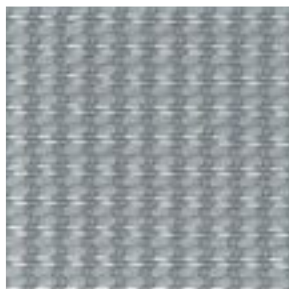
# M



T1



T4



T3



T2



55% Polyester  
45% Polyamide



280 g/m<sup>2</sup>



EN 1021 1-2



UNI EN ISO 12947-2  
100.000 Cicli/Cycles



EN ISO 105 B02 (6)

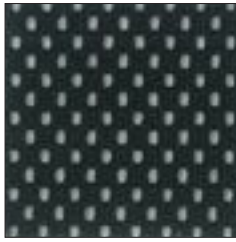


Oeko-Tex®

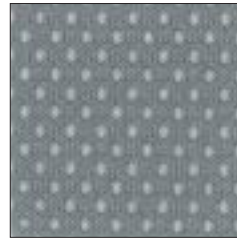
# MICRO



# N



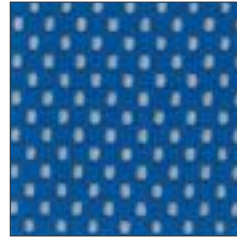
C1



C2



C3



C4



C5



C6



100% Polyester



350 g/m<sup>2</sup>



EN 1021 1-2



UNI EN ISO 12947 - 2  
100.000 Cicli/Cycles



EN ISO 105 B02 (5)  
EN ISO 105 X12 (4-5)



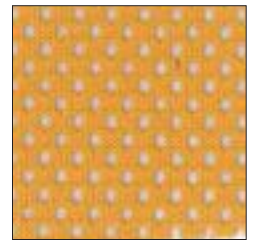
Oeko-Tex®



C9



C7



C8

# VEGA



# N



V1



V2



V3



V6



V7



V5



100% Polyamide



250 g/m<sup>2</sup>



UNI EN 20344-45  
52.000 Cicli/Cycles



UNI 7633 (>4)

# COLUMBIA

Leather



On request

# H



PC01



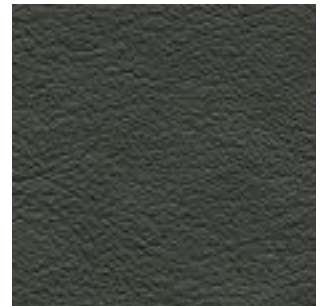
PC03



PC02



PC04



PC05



PC06



Bovine Hide



Genuine Leather



900 g/m<sup>2</sup>



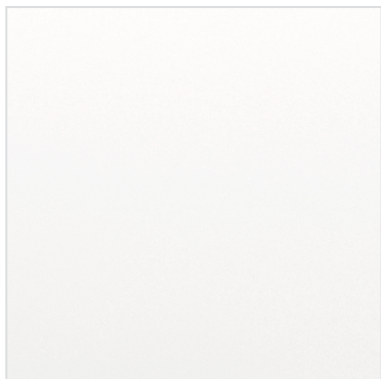
EN ISO 1021 1-2  
BS 5852 1990 SEC. 4 NI/0-1



EN ISO 105 B02 (5)  
IUF 450/ UNI EN ISO 11640 (≥4)



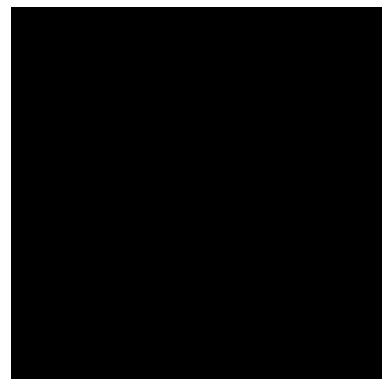
## MATT LACQUERING



RAL 9010



RAL 3003

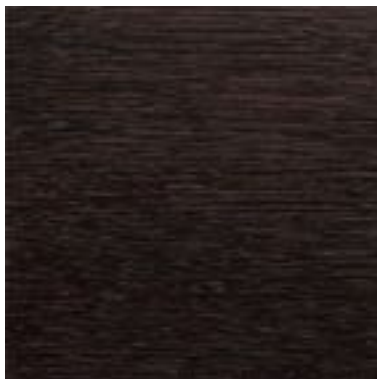


RAL 9005

## PAINTING



BLEACHED LIGHT OAK  
VENEERED PAINTED



WENGÈ

### CLEANING AND MAINTENANCE

Keep away from heat and direct sunlight.

Cleaning: use a cloth dampened in slightly soapy water (with neutral soap).

The cleaning movement should be, as far as possible, parallel to the wood grain.

## SLIM RAL



RAL 9005



RAL 9016



RAL 3001



RAL 7046



RAL 7003



RAL 7032



RAL 5009



RAL 6017



RAL 6027

## FLEXA BACKREST COLOURS



0999



0901



0703



0604



0202



0602



0503

## PLASTIC COLOURS

PRETTY



0201



0603



0502



0702



0302



0999

ZIP



0502



0702



0302



0999



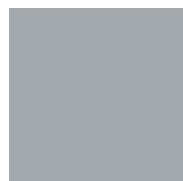
0601



0301



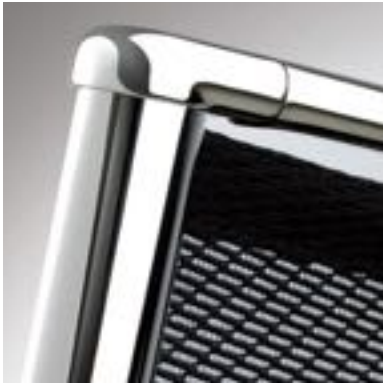
0501



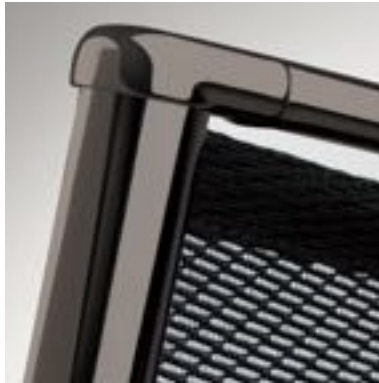
0701

P

## FRAME AVAILABLE FINISHING

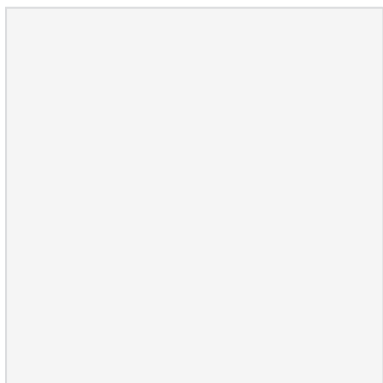


CHROMED

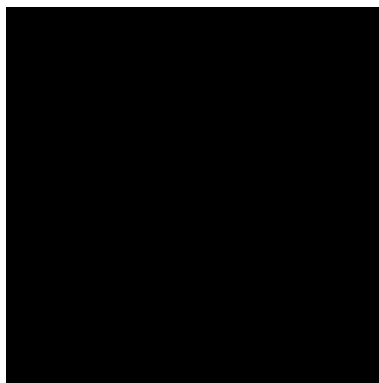


BLACK CHROMED

## FRAME AVAILABLE COLOURS



WHITE



BLACK



GREY

# MOVING

Upholsteries - Finishings - Colours

The best and certified upholsteries. The smartest lacquerings and paintings. A world of colours and finishings choices.

---

## LEGEND



Composition



Weight



Flammability



Abrasion Resistance  
Martindale



Colour Fastness



Oeko-Tex®



Antimicrobial / Antiacarus



Genuine Leather

## CLEANING AND MAINTENANCE

Ordinary cleaning: gently remove upholstery dust with a soft brush. Use a mild solution of neutral soap and water to be applied gently with a dampened cloth. Dry and revive the fabric by brushing again.

Periodically soften the leather by using a cloth dampened with water and neutral soap.

To avoid permanent stains, the lighters colours of the fabric should not be brought into contact with textiles and clothes coloured with unfixed dyes. We cannot guarantee the ability to remove unknown dyes from light coloured product.

## IMPORTANT INFORMATION

Upholsteries might present slight differences in tonality compared to the samples.

Moving, to improve the technical and qualitative characteristics of production, reserves the right at any time to modify entirely or partially the content of the present catalogue even without notice.

---

# MOVING



Via dell'Artigianato 1 - 36070 Trissino (VI) Italy

Tel. +39 0445 490777 - Fax. +39 0445 490008

info@moving.vi.it - www.moving.vi.it